

9:1 Multiplikation

$4 \cdot 8 = \underline{32}$

$3 \cdot 9 = \underline{27}$

$7 \cdot 2\,000 = \underline{14\,000}$

$5 \cdot 600 = \underline{3\,000}$

$4 \cdot 80 = \underline{320}$

$3 \cdot 90 = \underline{270}$

$2 \cdot 700 = \underline{1\,400}$

$5 \cdot 60 = \underline{300}$

$4 \cdot 800 = \underline{3\,200}$

$3 \cdot 900 = \underline{2\,700}$

$7 \cdot 2 = \underline{14}$

$50 \cdot 60 = \underline{3\,000}$

$4 \cdot 8\,000 = \underline{32\,000}$

$3 \cdot 9\,000 = \underline{27\,000}$

$7 \cdot 20 = \underline{140}$

$5 \cdot 6 = \underline{30}$

$40 \cdot 80 = \underline{3\,200}$

$30 \cdot 90 = \underline{2\,700}$

$70 \cdot 200 = \underline{14\,000}$

$50 \cdot 600 = \underline{30\,000}$

$40 \cdot 800 = \underline{32\,000}$

$30 \cdot 900 = \underline{27\,000}$

$70 \cdot 20 = \underline{1\,400}$

$5 \cdot 6\,000 = \underline{30\,000}$



$90 \cdot 60 = \underline{5\,400}$

$5 \cdot 500 = \underline{2\,500}$

$70 \cdot 30 = \underline{2\,100}$

$4 \cdot 200 = \underline{1\,400}$

$6 \cdot 7\,000 = \underline{42\,000}$

$9 \cdot 500 = \underline{4\,500}$

$9 \cdot 8\,000 = \underline{72\,000}$

$80 \cdot 80 = \underline{6\,400}$

$80 \cdot 200 = \underline{16\,000}$

$30 \cdot 30 = \underline{900}$

$20 \cdot 900 = \underline{18\,000}$

$4 \cdot 60 = \underline{240}$

9:2 Division med 10, 100 och 1 000

$$\frac{43\,000}{1\,000} = \underline{43}$$

$$\frac{58\,000}{100} = \underline{580}$$

$$\frac{90}{10} = \underline{9}$$

$$\frac{43\,000}{100} = \underline{430}$$

$$\frac{58\,000}{10} = \underline{5\,800}$$

$$\frac{900}{100} = \underline{9}$$

$$\frac{43\,000}{10} = \underline{4\,300}$$

$$\frac{58\,000}{1\,000} = \underline{58}$$

$$\frac{9\,000}{1\,000} = \underline{9}$$

$$\frac{72\,000}{1\,000} = \underline{72}$$

$$\frac{5\,000}{1\,000} = \underline{5}$$

$$\frac{4\,000}{1\,000} = \underline{4}$$

$$\frac{72\,000}{100} = \underline{720}$$

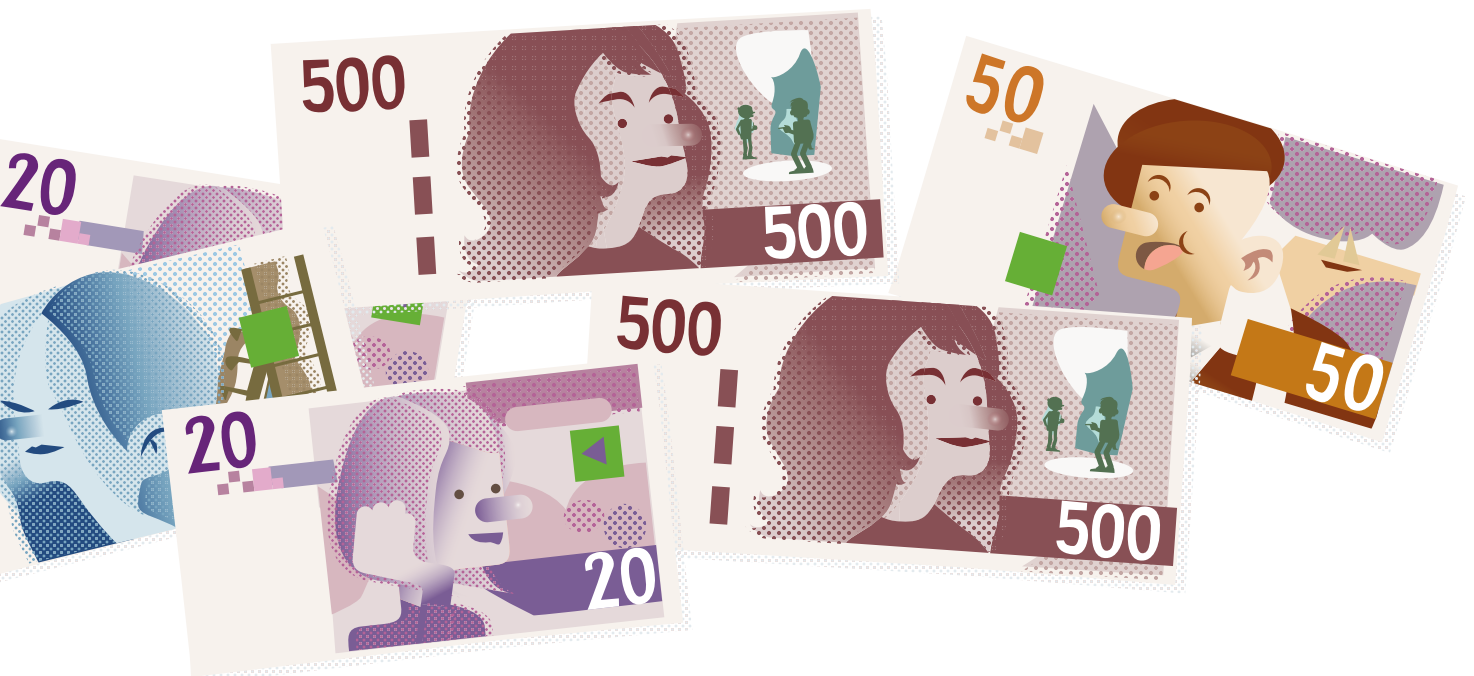
$$\frac{500}{100} = \underline{5}$$

$$\frac{70}{10} = \underline{7}$$

$$\frac{72\,000}{10} = \underline{7\,200}$$

$$\frac{50}{10} = \underline{5}$$

$$\frac{800}{100} = \underline{8}$$



$$\frac{37\,000}{10} = \underline{3\,700}$$

$$\frac{6\,000}{1\,000} = \underline{6}$$

$$\frac{99\,000}{1\,000} = \underline{99}$$

$$\frac{300}{100} = \underline{3}$$

$$\frac{65\,000}{100} = \underline{650}$$

$$\frac{60}{10} = \underline{6}$$

$$\frac{26\,000}{1\,000} = \underline{26}$$

$$\frac{87\,000}{100} = \underline{870}$$

$$\frac{3\,000}{1\,000} = \underline{3}$$

$$\frac{8\,000}{1\,000} = \underline{8}$$

$$\frac{400}{100} = \underline{4}$$

$$\frac{19\,000}{100} = \underline{190}$$

9:3 Mer division

$$\frac{8\,000}{4} = \underline{2\,000}$$

$$\frac{700}{7} = \underline{100}$$

$$\frac{9\,000}{3\,000} = \underline{3}$$

$$\frac{800}{4} = \underline{200}$$

$$\frac{7\,000}{7} = \underline{1\,000}$$

$$\frac{90}{30} = \underline{3}$$

$$\frac{80}{4} = \underline{20}$$

$$\frac{70}{7} = \underline{10}$$

$$\frac{900}{300} = \underline{3}$$

$$\frac{6\,000}{3} = \underline{2\,000}$$

$$\frac{4\,000}{2\,000} = \underline{2}$$

$$\frac{60}{20} = \underline{3}$$

$$\frac{600}{3} = \underline{200}$$

$$\frac{400}{200} = \underline{2}$$

$$\frac{6\,000}{2\,000} = \underline{3}$$

$$\frac{60}{3} = \underline{2}$$

$$\frac{40}{20} = \underline{2}$$

$$\frac{600}{200} = \underline{3}$$



$$\frac{60}{6} = \underline{10}$$

$$\frac{60}{30} = \underline{2}$$

$$\frac{40}{20} = \underline{2}$$

$$\frac{8\,000}{2\,000} = \underline{4}$$

$$\frac{800}{200} = \underline{4}$$

$$\frac{6\,000}{3\,000} = \underline{2}$$

$$\frac{600}{300} = \underline{2}$$

$$\frac{9\,000}{3} = \underline{3\,000}$$

$$\frac{8\,000}{4\,000} = \underline{2}$$

$$\frac{3\,000}{3} = \underline{1\,000}$$

$$\frac{80}{20} = \underline{4}$$

$$\frac{400}{2} = \underline{200}$$

9:4 Talsortsräkning multiplikation

1 a) $2 \cdot 31 = 62$ _____

b) $3 \cdot 23 = 69$ _____

c) $4 \cdot 22 = 88$ _____

d) $2 \cdot 43 = 86$ _____

2 a) $3 \cdot 123 = 369$ _____

b) $4 \cdot 212 = 848$ _____

c) $2 \cdot 324 = 648$ _____

d) $3 \cdot 311 = 933$ _____

3 a) $3 \cdot 321 = 963$ _____

b) $4 \cdot 112 = 448$ _____

c) $2 \cdot 424 = 848$ _____

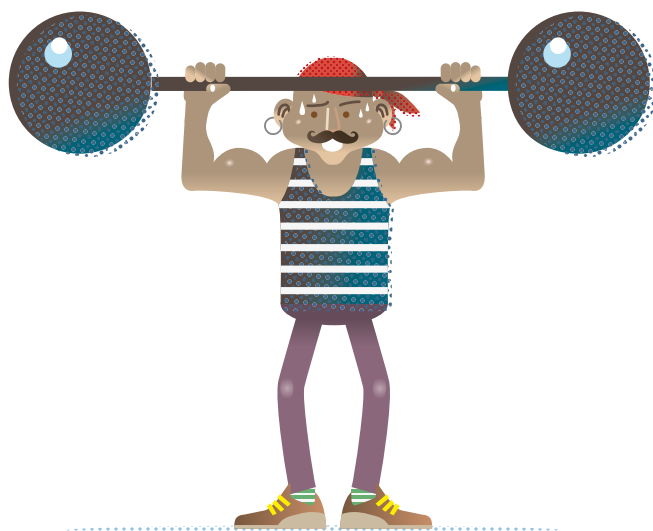
d) $3 \cdot 312 = 936$ _____

4 a) $3 \cdot 213 = 639$ _____

b) $4 \cdot 221 = 884$ _____

c) $2 \cdot 414 = 828$ _____

d) $3 \cdot 323 = 969$ _____



9:5 Uppställning multiplikation

1 a) $8 \cdot 52$

b) $6 \cdot 47$

c) $9 \cdot 68$

d) $4 \cdot 75$

			4	/	6																	

2 a) $5 \cdot 326$

b) $7 \cdot 294$

c) $3 \cdot 863$

d) $8 \cdot 472$

			1	6	3	0																

3 a) $5 \cdot 306$

b) $7 \cdot 583$

c) $3 \cdot 762$

d) $8 \cdot 363$

			1	5	3	0																

4 a) $5 \cdot 3261$

b) $7 \cdot 2941$

c) $3 \cdot 8633$

d) $8 \cdot 4714$

			1	6	3	0	5															

9:6 Division med rest

Räkna ut och skriv vilken rest det blir.

$$\frac{9}{4} = \underline{2, \text{ rest } 1}$$

$$\frac{15}{4} = \underline{3, \text{ rest } 3}$$

$$\frac{7}{3} = \underline{2, \text{ rest } 1}$$

$$\frac{16}{5} = \underline{3, \text{ rest } 1}$$

$$\frac{9}{5} = \underline{1, \text{ rest } 4}$$

$$\frac{18}{4} = \underline{4, \text{ rest } 2}$$

$$\frac{5}{2} = \underline{2, \text{ rest } 1}$$

$$\frac{23}{6} = \underline{3, \text{ rest } 5}$$

$$\frac{37}{8} = \underline{4, \text{ rest } 5}$$

$$\frac{37}{4} = \underline{9, \text{ rest } 1}$$

$$\frac{46}{6} = \underline{7, \text{ rest } 4}$$

$$\frac{55}{7} = \underline{7, \text{ rest } 6}$$

$$\frac{22}{5} = \underline{4, \text{ rest } 2}$$

$$\frac{65}{8} = \underline{8, \text{ rest } 1}$$

$$\frac{25}{6} = \underline{4, \text{ rest } 1}$$

$$\frac{51}{6} = \underline{8, \text{ rest } 3}$$

$$\frac{23}{7} = \underline{3, \text{ rest } 2}$$

$$\frac{47}{9} = \underline{5, \text{ rest } 2}$$

$$\frac{27}{8} = \underline{3, \text{ rest } 3}$$

$$\frac{38}{7} = \underline{5, \text{ rest } 3}$$

$$\frac{29}{3} = \underline{9, \text{ rest } 2}$$

$$\frac{23}{8} = \underline{2, \text{ rest } 7}$$

$$\frac{27}{4} = \underline{6, \text{ rest } 3}$$

$$\frac{9}{8} = \underline{1, \text{ rest } 1}$$



9:7 Aktivitet sidan 113 i lärarguiden

$$\frac{17}{4}$$

$$\frac{50}{6}$$

$$\frac{27}{6}$$

$$\frac{10}{3}$$

$$\frac{25}{7}$$

$$\frac{14}{4}$$

$$\frac{20}{3}$$

$$\frac{39}{5}$$

$$\frac{33}{9}$$

$$\frac{37}{8}$$

$$\frac{57}{6}$$

$$\frac{7}{3}$$

$$\frac{31}{4}$$

$$\frac{48}{5}$$

$$\frac{68}{7}$$

$$\frac{34}{6}$$

$$\frac{23}{9}$$

$$\frac{78}{8}$$

$$\frac{39}{4}$$

$$\frac{26}{3}$$

$$\frac{16}{6}$$

$$\frac{41}{7}$$

$$\frac{45}{8}$$

?

9:8 Kort division med minnessiffror

1 a) $\overset{2}{84} \div 3 = \underline{\quad 28 \quad}$

c) $\overset{1}{92} \div 4 = \underline{\quad 23 \quad}$

b) $\overset{1}{54} \div 2 = \underline{\quad 27 \quad}$

d) $\overset{2}{75} \div 5 = \underline{\quad 15 \quad}$

2 a) $\overset{1}{847} \div 7 = \underline{\quad 121 \quad}$

c) $\overset{1}{585} \div 5 = \underline{\quad 117 \quad}$

b) $\overset{2}{846} \div 6 = \underline{\quad 141 \quad}$

d) $\overset{3}{872} \div 4 = \underline{\quad 218 \quad}$

3 a) $\overset{11}{795} \div 3 = \underline{\quad 265 \quad}$

c) $\overset{32}{875} \div 5 = \underline{\quad 175 \quad}$

b) $\overset{21}{994} \div 7 = \underline{\quad 142 \quad}$

d) $\overset{11}{732} \div 6 = \underline{\quad 122 \quad}$

4 a) $\overset{1}{4\ 328} \div 4 = \underline{\quad 1\ 082 \quad}$

c) $\overset{1}{3\ 296} \div 8 = \underline{\quad 412 \quad}$

b) $\overset{1}{5\ 463} \div 9 = \underline{\quad 607 \quad}$

d) $\overset{123}{6\ 780} \div 5 = \underline{\quad 1\ 356 \quad}$

